



Cost-effective, high performance, next-generation “all-in-one” security appliance platform with comprehensive manageability, application firewall, VPN, web caching, web filtering and more

mISA network security appliance deliver comprehensive, multi-layered defense against threats to networks and Microsoft applications, content acceleration, intuitive management, and scalability - fully integrated, with turnkey “out of the box” convenience!

At the heart of the mISA is Microsoft ISA Standard Server 2006, an advanced Stateful packet and application-layer inspection firewall, virtual private network (VPN) and an Web cache solution that enables all size business and enterprise customers to easily maximize existing information technology (IT) investments by improving network security and performance with seamless Active Directory Service (ADS) Support.

### Integrated Security Functionality: Microsoft ISA Software

#### Multi-Layer Stateful Firewall Support:

- Offers all three functionality, packet-filtering, stateful filtering and deep content filtering through application-level filters
- Stateful filtering supports dynamic packet filtering which opens ports only when necessary, it examine data crossing the firewall in the context of its protocol and the state of the connection and protect against number of sub-application layer at tacks, such as session hijacking
- Flood resiliency feature protect against permanently unavailable, compromised, or unmanageable during a flood attack

#### Smart Application-Layer Firewall Support :

- Full featured application-layer aware firewall comprehensively helps protect from attack by both external and internal threats. It performs deep inspection of Internet protocols such as HTTP, FTP, SMTP, steaming media applications, H.323, IDS, RPC, SOCKS and Web Proxy filters which enables it to detect many threats that traditional firewalls cannot detect.

#### VPN Support :

- Integrated VPN client access based on Windows Server 2003 functionality
- VPN Client stateful filtering, deep inspection and quarantine, helping protect net works from attacks that enter through a VPN connection
- Site-Site IPSec Connectivity between two separate offices, stateful filtering and inspection of remote office resource access.

#### Secure Application Publishing :

- Secure access to remote users outside the corporate network, protects web application behind the firewall such as Web Servers, SharePoint Portal, IIS, E-mail server applications like “outlook anywhere” access to Exchange using Outlook Web and Mobile Access (OWA/OMA), Active Sync and RPC over HTTPS.

#### High Performance Web Caching and Bandwidth Optimization :

- Increased web performance with accelerated web caching,
- Active content caching of popular content,
- Content distribution and mirroring, and scheduled content download.

#### Intrusion Detection :

- Protection against common network attacks such as port scanning, WinNuke, Land, UDP bomb and Ping of Death.

#### Authentication :

- Single sign on (SSO), users authenticate only once
- Multi-Factor authentication using forms-based authentication and client certificate

#### Monitoring, Logging and Reporting :

- Monitoring tools to help track network status create alerts to get status on firewall behavior, configure and view logs graphically to track ISA activity, and create reports to customize and summarize log information.
- Supports standard data formats such as World Wide Web Consortium (W3C) and ODBC.

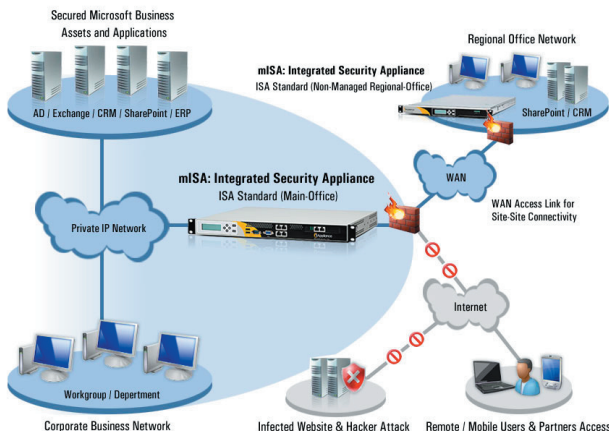
### Product Highlights:

- Microsoft ISA Server 2006 Standard and Hardened Windows Server 2003
- Enhanced “integrated edge security” gateway architecture, supports industry standards and seamless integration into Microsoft centric infrastructures
- Accelerates access to frequently requested content through web caching
- Bandwidth Management (Qos) thru FairShare
- Network Access Control (NAC), End-Point Security thru VPN-Q
- Choice of Five purpose-built appliance platforms, scalable architecture built using multi-core 64-bit Processor, high network port density and SSL/IPSec crypto accelerators for highest application performance and network throughput
- Maximum uptime thru component-level redundancy and serviceability
- Deploy fully integrated security solution in as little as 30 minutes

### Key Features and Benefits:

- **Intelligent Application Gateway Platform.** Integrated appliance for network perimeter defense, remote access, application-layer protection, web content caching and endpoint security for Microsoft based Infrastructures
- **Centralized Policy Based Access Control.** Centralizes policy management, controlling access by protocol or application type and by user, group, roles, schedules, content type tied to Active Directory
- **Easy Windows MMC based Manageability.** Traditionally, enterprise-class firewalls have had a reputation for being difficult to learn, configure and maintain. Net-Gateway mISA series offers industry most advance feature and familiar windows interface and is the most complete product in its class
- **Lowest Total Cost of Ownership.** Exceptional ease of implementation enables IT leaders to be confident that their network, users, client devices, and application are protected with the leading Microsoft security appliance family celebrated for assured performance and lowest TCO
- **Centralized Appliance Management through ONEface™.** Our Intuitive Web GUI management tool offers easy network setup, configuration, backup/restore, updates, logging, reporting, 3rd party security applications add-on and centralized appliance system operation
- **Flash Based Field Recovery and Restore System (FFRS™).** Our recovery system combined with advanced LCD functionality offers appliance recovery to factory defaults enables multiple system image copies backup to local disk or network, and instant restore to last good known state. Graphical LCD provides an easy to use front panel for easy network configuration, management and status display
- **Superior Product Technology, Value and Support.** Enjoy state of the art system and application integration, best price-to-performance-ratios in the industry, deployment assistance for Microsoft ISA and IAG technologies, global technical support, efficient appliance life cycle management and up grades, and above all future proofing with Microsoft security architecture.
- **“Best-of-the-Breed” ISV Add-On Security Application Support.** mISA comes pre-loaded with more than 20 popular security application software’s from industry leading vendors such as Web Washer, McAfee, Winfrasoft, Secure Computing, GFI. You can easily turn mISA into a multi-functional “all-in-one” gateway security appliance by adding functionalities such as Web-Content filtering, Anti-Virus and Anti-Spam filtering, Bandwidth QoS management, End-Point NAC security, Multi-Factor authentication, Citrix terminal print services and many more. Users can purchase software key to activate these applications.

## Net-Gateway mISA Business Security Appliance



## mISA Deployment: Unified Security Delivery Infrastructure

- **One Firewall Appliance Platform Fits All Business Security Needs.** Purpose-built, robust, multi-purpose standalone security and content caching solution for small offices to large enterprise deployments, provides single sign-on and seamless Active Directory Service Integration. Support large number of 3rd party ISV add-on security software modules
- **Anywhere VPN Remote Access Appliance:** Securely extend access to partners, customers, consultants and remote employees to applications, documents, and data from any PC or device from outside the corporate network.
- **Secure Web Application Publishing Appliance.** Securely publish Exchange, OWA, SharePoint or any web application for remote access.
- **Site-to-Site VPN Connectivity Appliance.** Easy corporate network expansion, integrate departments and regional offices of all sizes at multiple locations.
- **Web Content Filtering Appliance.** employee access control and protection

## Integrated Security Functionality: ISV Add-On Software Modules

mISA series appliances are pre-loaded with a number of additional industry leading and useful security software modules. Below is a list of the ones which are pre-installed, pre-configured and included in the purchase price, and many other optional-packages which are tested, pre-load and made available as an install options for your convince. Customers can choose needed optional-packages for installation manually and purchase a software license(\*) for activation.

All security software application packages run on a hardened operating system, securely managed and updated via ONEface, the nAppliance Web Services interface.

### Web Content Filters:

It enables IT administrators to control employee Internet usage with a flexible, scalable and high performance solution to your Internet Content Filtering needs. The URL Category List and Adaptive Reasoning Technology, together with advanced monitoring and reporting, lets you analyze and understand your company's Internet usage. A powerful policy engine enables you to manage your Internet access to enhance productivity, maximize resources and reduce risks.

- Websense – Enterprise (\*)
- Secure Computing – Webwasher Suite (\*)
- Secure Computing - SmartFilter (\*)
- Burstek - bt-WebFilter (\*)
- GFI - WebMonitor (\*)
- SurfControl –Security Suite (\*)
- Collective Software - ClearTunnel (\*)

### Mail-Filter: Anti-Virus, Anti-Spam

Mail-Filter modules for Microsoft ISA Server are tightly integrated solution that protects all incoming SMTP, HTTP and FTP traffic on the local network. The application offers protection not only from viruses and spam, but also from potentially harmful programs. We bundle a wide range of pre-packaged modules which provides highest detection rates of malicious programs and spam.

- Kaspersky® - Anti-Virus (\*)
- SecurityShield by McAfee (\*)
- Secure Computing – Webwasher Enterprise Security Suite (\*)
- GFI - MailSecurity (\*)
- Avira - AntiVir (\*)

### Bandwidth (QoS) Management: FairShare by Deterministic Networks (\*\*)

FairShare is a full-featured bandwidth manager which provides unbeatable combination of bandwidth management, acceleration and access control. It allows you to control the mix traffic which leaves or enters your corporate networks and remote sites. You can limit and guarantee bandwidth, give priority, provide minimum latency, mark for DiffServ and 802.1p, and apply other policies to users, groups of users, applications, and destinations. Policies can be set by time of day or network load levels.

### NAC-End Point Quarantine: VPN-Q By Winfrasoft (Included, 5-Lic)

Winfrasoft VPN-Q 2008 - VPN-Q 2006 is the premier VPN Quarantine and VPN Compliance solution for deploying and managing quarantine services within Microsoft ISA Server to provide endpoint security checking for VPN connections over PPTP, L2TP/IPSec, and IPSec Tunnel Mode protocols. No scripting or coding is required, it creates a complete client & server solution for secure remote access with client side compliance checking and can be deployed in minutes!

### Authentication: Multi-Factor

Web servers, internet applications and computer networks must be secured against unauthorized access. Secret passwords are still widely used for authentication purposes but conventional passwords represent a dangerous security hazard. servers simultaneously.

- RSA – SecureID (\*)
- KOBIL - SecOVID (\*)

### Other Network Services

- X-Forwarded-For ISA Server By Winfrasoft (\*)
- Print - Terminal Service Print Manager by Thinprint (\*)

(\*)License sold separately, (\*\*)Ship Q208



nAppliance Networks, Inc.

540 Dado Street, San Jose, CA 95131, USA

Phone: 1-408-895-5000 (Local) 1-877-895-nAPP (6277) (US-Toll Free) 011-408-895-5000 (International)

Fax: 1-408-943-8222/8101 Email: [info@nappliance.com](mailto:info@nappliance.com) Website: <http://www.nappliance.com>



nAppliance Networks, the nAppliance Networks, mISA, mISAE, mIAG, ONEface, FFRS are trademarks of nAppliance Networks, Inc. All other brands, product names, trade names, trademarks and service marks used herein are the property of their respective owners. Copyright ©2006 nAppliance Networks, Inc. All rights reserved.



Models: mISA (Product Specifications)	500W	1100W	1200W	2100S	2200S	3200S
<b>Deployment Type (Business)*</b>	Small	Small, Medium	Medium	Medium, Large	Large	Very Large
Recommended Connected PC	200	300	500	2,000	3,000	4,000
Recommended Corporate Users (Websense Web-Filtering)	1000	1000	5,000	10,000	15,000	20,000
TMG Optimized Hardware Platform **	No	Yes	Yes	Yes	Yes	Yes
<b>System Performance</b>						
Firewall - Throughput (mbps) Max	1800	1800	2000	2400	2400	2600
HTTP - Throughput (mbps) Max	120	120	150	200	200	240
VPN - Throughput (mbps) Max	100	100	160	200	200	200
<b>High Availability, Scalability and Replication</b>						
Scalability: Microsoft Network Load Balancer (NLB) Cluster	No	No	No	No	No	No
High-Availability: Active/Active Failover (NLB) Cluster	No	No	No	No	No	No
<b>Hardware Specifications</b>						
<b>Network Ports: LAN PCIe (RJ45)</b>	4-GbE (Rear)	4-GbE (Rear)	6-GbE (Rear, front-optional)	6-GbE (Rear)	6-GbE (Rear)	8-GbE (Rear)
<b>Network Port: Lights Out Management, IPMI (RJ45)</b>	Optional, Shared	Optional, Shared	Optional, Shared	Yes, Dedicated	Yes, Dedicated	Yes, Dedicated
<b>Hardware Crypto Accelerator CPU-Off-Load</b>	No, Software Only	No, Software Only	Yes, 64-bit PCI-X	Yes, 64-bit PCIe	Yes, 64-bit PCIe	Yes, 64-bit PCI-X
TPS/Throughput: SSL or IPSec Rating	-	-	7,000 / 1Gbps max	17,000 / 2.5Gbps(max)	17,000 / 2.5Gbps (max)	11,000 / 2.5Gbps (max)
<b>CPU-Only / Core Type</b>	(1) Intel Pentium Dual Core	(1) Intel Pentium Dual Core	(1) Intel Core2 Duo	(1) Xeon Quad Core (Conroe)	(1) Xeon Quad Core (Conroe)	(2) Xeon Quad Core (Cloverton)
<b>CPU FSB / L2-Cache</b>	800MHz / 4MB	800MHz / 4MB	800MHz / 4MB	1066MHz / 8MB	1066MHz / 8MB	1066MHz / 8MB ea
<b>Memory-RAM **</b>	2 GB DDR2 ECC	4 GB DDR2 ECC (earlier models w/2GB)	4 GB DDR2 ECC (earlier models w/2GB)	6 GB DDR2 ECC (earlier models w/4GB)	8 GB DDR2 ECC (earlier models w/4GB)	12 GB DIMM ECC (earlier models w/4GB)
<b>Hard Disk - System OS</b>	(1) 3.5" Internal	(2) 3.5" Internal	(2) 3.5" Internal	(2) 3.5" Hotswap, Front	(2) 3.5" Hotswap, Front	(2) 3.5" Hotswap, Front
Disk - Qty / Type **	80 GB, SATA2	250 GB, SATA2 (earlier model w/80GB)	500 GB, SATA2 (earlier model w/80GB)	500 GB, SATA2 (earlier model w/250GB)	300 GB, SAS, 15K (earlier model w/73GB)	300 GB, SAS, 15K (earlier model w/73GB)
Disk-Mirror Hardware RAID	No	Yes, RAID-1	Yes, RAID-1	Yes, RAID-1	Yes, RAID-1	Yes, RAID-1
<b>Flash Disk: Recovery OS</b>	Yes	Yes	Yes	Yes	Yes	Yes
FFRS: Flash based Field Recovery System	No	Yes	Yes	Yes	Yes	Yes
<b>ROM Drive-DVD / CD Built-In</b>	No	No	No	Yes	Yes	Yes
<b>LCD Interface w/6-Keypad</b>	No	Yes, Graphical	Yes, Graphical	Yes, Graphical	Yes, Graphical	Yes, Graphical
<b>Power Supply Module</b>	Single	Single	Single	Single	Dual, Hotswap	Dual, Hotswap
Power: Universal 110-120V	260 Watts	260 Watts	260 Watts	560 Watts	2 x 450 Watts	2 x 650 Watts
Ports (USB / RS232 / VGA)	2 / 1 / 1	2 / 1 / 1	2 / 1 / 1	2 / 1 / 1	2 / 1 / 1	2 / 1 / 1
<b>Form-Factor</b>	1U 2-Post	1U 2-Post	1U 2-Post	1U Rackmount 4-Post	1U Rackmount 4-Post	1U Rackmount 4-Post
<b>Dimensions (H x W x D)-inch</b>	1.75 x 17 x 14	1.75 x 17 x 14	1.75 x 17 x 14	1.75 x 17 x 25	1.75 x 17 x 25	1.75 x 17 x 25
<b>Management: Features by nAppliance</b>						
<b>LCD based Appliance Configuration Manager</b>	Yes	Yes	Yes	Yes	Yes	Yes
<b>ONEface: Web based Appliance Manager</b>	Yes	Yes	Yes	Yes	Yes	Yes
Web-Based Appliance Setup and Management	Yes	Yes	Yes	Yes	Yes	Yes
Automatic Software Updates (from nAppliance)	Yes	Yes	Yes	Yes	Yes	Yes
<b>FFRS: Flash Based Field Recovery System (CLI)</b>	Yes	Yes	Yes	Yes	Yes	Yes
Recovery Bare-Metal: Restore to Factory Default Image	Yes	Yes	Yes	Yes	Yes	Yes
Recovery Bare-Metal: DVD Bootable Media Included	Yes	Yes	Yes	Yes	Yes	Yes
Backup Image: Local and Network based Options	Yes	Yes	Yes	Yes	Yes	Yes
Restore Image: To any Last Good Known State	Yes	Yes	Yes	Yes	Yes	Yes
<b>LOM: Lights-Out Remote Appliance Management</b> (It provides BIOS-Level KVM Access over Web even when Appliance is powered-off)	Optional, IPMI over LAN	Optional, IPMI over LAN	Optional, IPMI over LAN	Yes, IPMI iKVM over LAN	Yes, IPMI iKVM over LAN	Yes, IPMI iKVM over LAN
IPMI based Out of Band Management	Optional, IPMI over LAN	Optional, IPMI over LAN	Optional, IPMI over LAN	Yes, IPMI iKVM over LAN	Yes, IPMI iKVM over LAN	Yes, IPMI iKVM over LAN
Lights-Out-Manager: Client-Based, CLI	Yes	Yes	Yes	Yes	Yes	Yes
Lights-Out-Manager: Web Based	No	No	No	Yes	Yes	Yes
Centralized Multi-Appliance Management Option	Yes	Yes	Yes	Yes	Yes	Yes
ONEface based Health Monitoring, SNMP Traps	Yes	Yes	Yes	Yes	Yes	Yes
<b>Management: Microsoft Built-In Support</b>						
<b>ISA Configuration Management</b>						
Centralized Multi-ISA Management Console (CSS)	No, Only Local	No, Only Local	No, Only Local	No, Only Local	No, Only Local	No, Only Local
<b>Operational Management</b>						
Automatic Software Updates (from Microsoft)	Yes	Yes	Yes	Yes	Yes	Yes
MO: Microsoft Operation Manager	Yes	Yes	Yes	Yes	Yes	Yes
<b>System Software</b>						
<b>Appliance System Software:</b>						
Hardened Microsoft Embedded Operating System	Windows Server 2003	Windows Server 2003	Windows Server 2003	Windows Server 2003	Windows Server 2003	Windows Server 2003
<b>Microsoft Security Suite</b>						
ISA: Internet Security & Acceleration Server 2006	Standard-Workgroup Edition	Standard-Workgroup Edition	Standard-Workgroup Edition	Standard Edition	Standard Edition	Standard Edition (2-CPU Lic)
<b>Microsoft License: User / CAL Required</b>	No	No	No	No	No	No
<b>Commerical 3rd Party Applications Support</b>	Yes	Yes	Yes	Yes	Yes	Yes
<b>Warranty: Standard Service and Support</b>						
Standard: Express Replacement, 30 Days	Yes	Yes	Yes	Yes	Yes	Yes
Standard: Help Desk Support, 30 Days	Yes	Yes	Yes	Yes	Yes	Yes
Standard: Hardware Depot Repair - 1 Year	Yes	Yes	Yes	Yes	Yes	Yes
Upgrade: Hardware Express Replacement - Multi-Year	Optional	Optional	Optional	Optional	Optional	Optional
Upgrade: Help Desk Support - Multi-Year	Optional	Optional	Optional	Optional	Optional	Optional
<b>Pricing (MSRP) - USA</b>						
<b>mISA: Standard Edition</b>						

\* Performance Guidelines Only, Actual performance may vary depending upon networking and application environment.  
 \*\* (09/21/2009), TMG Enhanced platforms includes additional RAM and larger size hard disks. Models 2100 and above, requires TMG upgrade w/Windows 2008R2 support to utilize memory size larger than 4GB.