

Unified Remote Access Appliance

Complete Remote Access Solution for the Modern Enterprise



Windows Server 2012



Microsoft
Forefront
Unified Access Gateway



URA: Unified Remote Access Appliance

Complete Remote Access Solution

The Iron Networks Unified Remote Access appliance series is based on Microsoft Windows Server 2012 and Microsoft Unified Access Gateway 2010(UAG), and is designed to be a powerful and versatile remote access solution for enterprise IT. The combination of Microsoft remote access technologies, and Iron Networks purpose built, security hardened, and performance tuned appliances, makes for a very powerful and compelling remote access solution.

Secure Turnkey Appliance Package

The appliance consists of a Windows Server 2012 host with custom appliance management tools and interface, running a virtual machine for UAG and a virtual machine for DirectAccess. As a collection of the top remote access technologies from Microsoft, on a secure and hardened appliance, with a single source of support, the URA appliance is a top choice for enterprise IT to complete their remote access strategies.

Microsoft DirectAccess

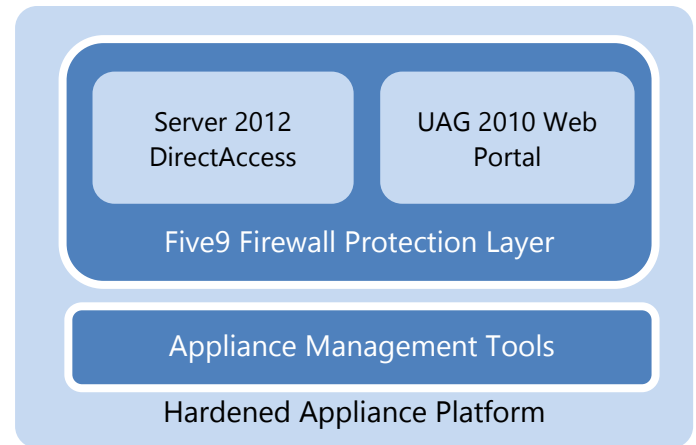
Always on, Seamless User Connectivity

Microsoft DirectAccess technology in Windows Server 2012 provides a seamless and transparent user experience. All users need to do is login to their domain joined corporate machine with their normal credentials, be connected to the internet, and DirectAccess automatically establishes a connection to the corporate resources. This eliminates the need for users to interface with the VPN functionality and increases their ease of access to corporate resources

Lower Internal IT Support Costs

Microsoft DirectAccess helps to lower the internal IT support costs for enterprises. In many companies, a majority of IT helpdesk support tickets are for users who have problems with various remote access technologies. With DirectAccess removing the user component from establishing connectivity, a majority of those cases can be avoided. DirectAccess also provides an always managed functionality by making the managed DA corporate endpoints always manageable when they are connected.

URA Appliance Series



DA Features and Prerequisites

Features

- Automatically connects user to corporate resources when on internet
- Ability to manage remote endpoints by IT admins
- Two way tunneling for management and access
- Secure IPSEC encrypted tunnel using IPv6
- Native support for OTP and Multi-factor
- Deployable behind firewall or NAT device
- Multi-Site deployment support with DA endpoints accessing closest site

Prerequisites

- Windows 8 Enterprise or...
- Windows 7 Enterprise or Ultimate
- Domain joined clients
- Active Directory
- Edge or DMZ
- PKI Optional
- No IPv6 Required-includes translation technologies

Microsoft Unified Access Gateway 2010

Anywhere Access

Forefront Unified Access Gateway 2010 makes it easier for organizations to deliver secure remote access to their applications and resources and improve employee and partner productivity, by combining an intelligent access policy engine and consolidating a variety of connectivity options

Integrated Security

Forefront Unified Access Gateway improves the security in remote access scenarios by enforcing granular access controls and policies that are tailored to the applications being published, the identity of the user, and the health status of the device being used. UAG further improves security by enabling strong authentication to applications and mitigating the risks of downloaded data from unmanaged devices.

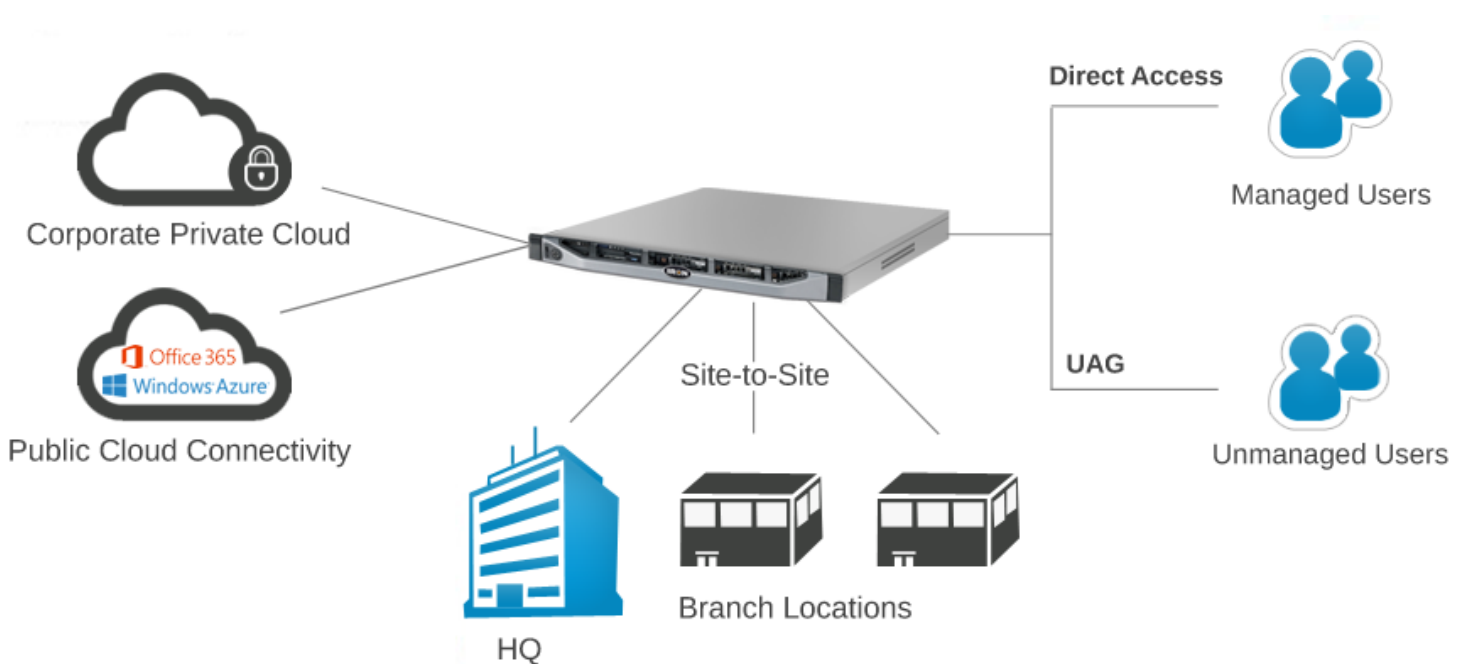
Simplified Management

With Forefront Unified Access Gateway, administrators have a single platform through which to deliver and manage remote access. With built in policies and configurations for common applications and devices, administrators gain more control and more efficient management

UAG 2010 Features

- Granular access controls for multiple user groups
- Endpoint health status checks
- Multiple user portals
- Customizable and brandable portals for individualized look and feel
- Secure access from any device
- Native integration with Multi-Factor Authentication
- Integrated SSL VPN
- Employee deployment scenarios for managed endpoints
- Customer deployment scenarios for unmanaged or public endpoints
- Partner deployment scenarios for unmanaged or public endpoints
- Optimized access for SharePoint, Exchange, and CRM, RD Terminal Services
- Download/Upload controls prevents data loss
- Easily integrated with active directory
- Prevents data leakage from unmanaged endpoints
- Built in policy templates and wizards
- Network connector and SSTP

Unified Remote Access: Complete Remote Access Across the Enterprise



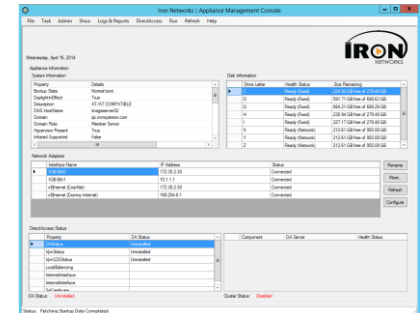
Product Specifications

	URA-3600C	URA-5600C
Recommended Max Users	Up to 5,000	Up to 10,000
CPU	(1)Xeon E5 2640V2	(2)Xeon E5 2640V2
Cache	20 MB	20 MB
Total Cores	8	16
Memory	32GB	64GB
Memory Type	DDR3-1600	DDR3-1600
HDD	(3)600GB SAS	(3)600GB SAS
RAID	1	1
Hotswap Drives	Yes	Yes
Hot Spare	Yes	Yes
1GbE NIC	4	4
10GbE NIC	4	4
PWS	(2) 495W Hotswap	(2) 495W Hotswap
LOM	Yes	Yes
Form Factor	1U Rack	1U Rack
Dimensions (H x W x L)	1.7" x 19" x 30.4"	1.7" x 19" x 30.4"
DOM w/Backup OS	4GB	4GB
Custom Console	Yes	Yes
Embedded Windows Server	Yes	Yes
Five Nine Security Firewall	Yes	Yes

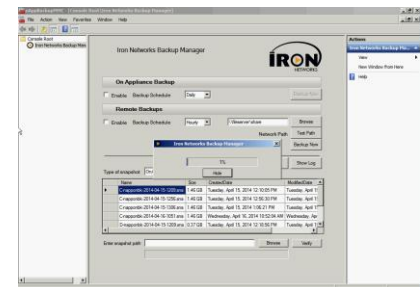
Appliance Features

- Performance tuned and optimized
- Security hardened, reduced attack surface
- Custom Appliance management Console
- Backup and snapshots
- Factory Image default restore
- Scalable with NLB load balancing or external load balancer

Appliance Management Console



Backup & Recovery Utility



Iron Networks Remote Access Appliance Support and Deployment Services

Support Services

Iron Networks offers three levels of support services depending on the business need and budget. Support services can be purchased in 1, 2, or 3 year increments, and renewed under standard support up to 5 years. The packages are comprehensive and our team of seasoned support representatives provide customers with a single-throat to choke for their complex security and remote access needs. More information about Iron Networks Support Plans can be found here:

www.ironnetworks.com/supportSLA

Deployment & Consulting Services

Iron Networks offers deployment and consulting services to ensure that the advanced remote access appliances are deployed correctly and efficiently for every type of scenario. These include basic rack and stack deployment services and appliance configuration, architecture consulting, and advanced customization work.

More information on Iron Networks professional services can be found here:

<http://www.ironnetworks.com/ps>

IronPOD, Virtual Iron, Net Gateway, MNV, nTMG, nUAG, nIAG, Oneface, ARRMS are trademarks of Iron Networks, Inc. All other brands, product names, trade names, trademarks and service marks used herein are the property of their respective owners. Copyright ©1996-2014 Iron Networks, Inc. All rights reserved.

Iron Networks, Inc.

980 Mission Court, Fremont, CA 94539, USA

Phone: +(1) 408-895-5000 (Local) +(1) 877-895-6277 (US-Toll Free) +(1) 408-895-5000 (International)

Fax: +(1) 408-943-8222/8101 Email: info@ironnetworks.com Website: www.ironnetworks.com

